



KITCHEN & BATHROOM
CABINET OPTIONS



3855 W. Glendale Ave. Phoenix, AZ 85051

(623) 930-7700

www.pjh-construction.com

TABLE OF CONTENTS

3	CRAFTSMAN 1 - DESIGN SERIES
5	CRAFTSMAN 1 - VALUE SERIES
7	CRAFTSMAN 1 - EUPA SERIES
9	CRAFTSMAN 2- CABINETSRY OPTIONS
11	CRAFTSMAN 3-CABINETSRY OPTIONS
17	CRAFTSMAN 4-CABINETSRY OPTIONS
18	CRAFTSMAN 5-CABINETSRY OPTIONS
23	CUSTOM CABINETSRY OPTIONS

CRAFTSMAN 1 DESIGN SERIES



Berkley Slate Grey



Grinnell Hickory Raised Panel



Harvard Cognac



Stanford Knotty Alder



Johns Hopkins Black Antique



Notre Dame White Antique

CRAFTSMAN 1 DESIGN SERIES



Bucknell Hickory Shaker

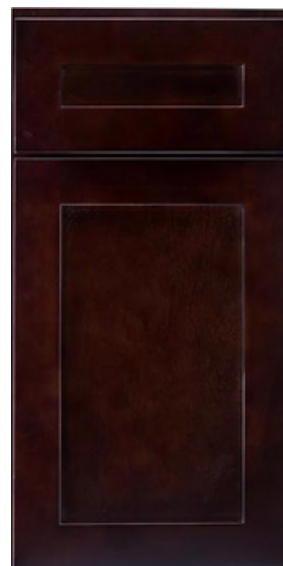
CRAFTSMAN 1 VALUE SERIES



Loyola Grey Shaker



Pomona White True Shaker



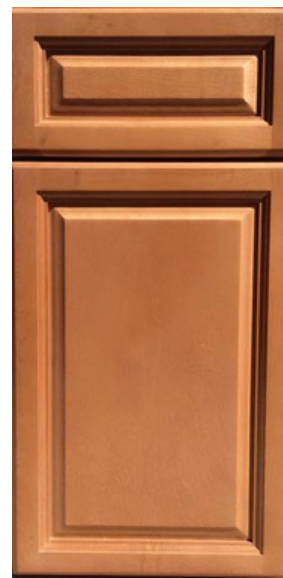
Vassar Espresso True Shaker



Wheaton White Raise Panel



Stonehill Stone Raise Panel



Middlebury Mirage Raise Panel

CRAFTSMAN 1 VALUE SERIES



Lanai
Greige Shaker



West Point
Smoke Grey Shaker



Kenyon
Espresso Raised Panel

CRAFTSMAN 1

EUPA SERIES



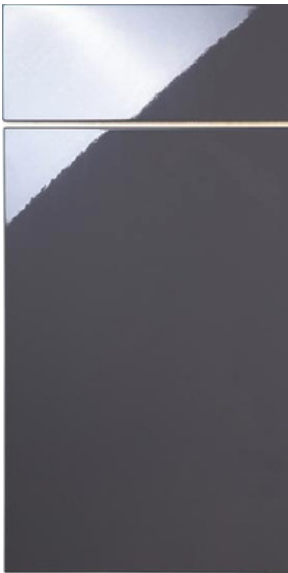
Cambridge Textured Grey



Oxford Textured Ice



Heidelberg Weathered Elmwood



Munich High Gloss Grey



Oslo High Gloss White



Vienna Matte Grey with Handles

CRAFTSMAN 1

EUPA SERIES



Berlin Black Shaker



London Matte White



Rome Matte Grey Raised Panel

CRAFTSMAN 2 CABINETS OPTIONS

Cabinet Finishes



White Shaker



Grey Shaker



Modern Slate



Blue Shaker



Black Shaker



Nano White



Nano Green

CRAFTSMAN 2 CABINETS OPTIONS

CABINET FEATURES



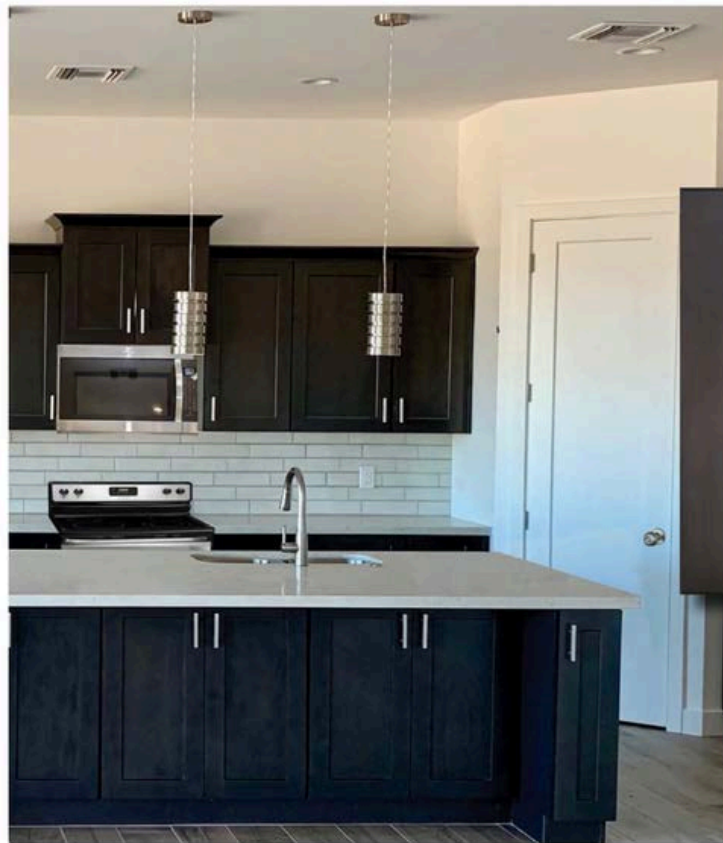
CRAFTSMAN 3 CABINETS OPTIONS



WHITE SHAKER

CRAFTSMAN 3 CABINETS OPTIONS

MODERN SLATE



MODERN SLATE

CRAFTSMAN 3 CABINETS OPTIONS

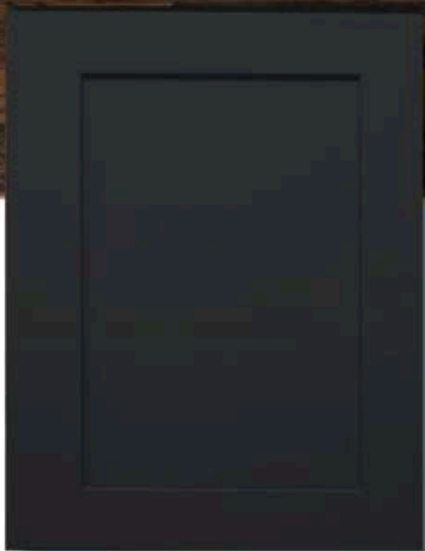
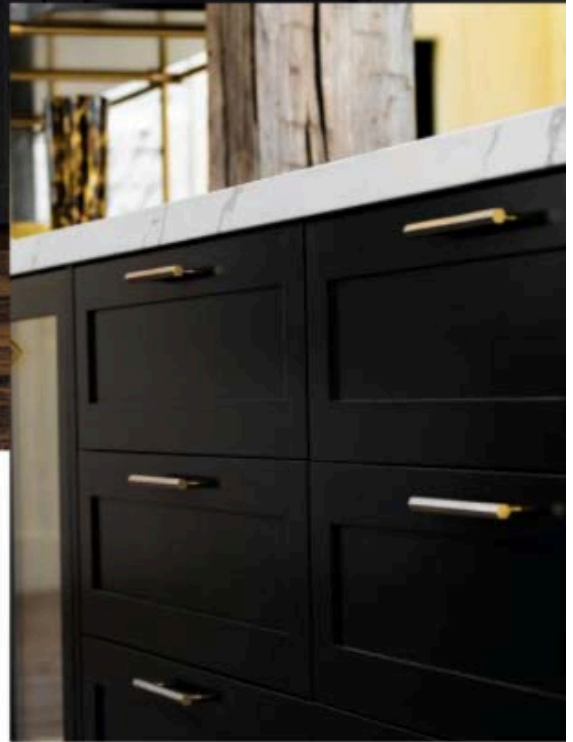
SIGNATURE BLUE



SIGNATURE BLUE

CRAFTSMAN 3 CABINETS OPTIONS

BLACK ONYX



BLACK ONYX

CRAFTSMAN 3 CABINETS OPTIONS

GREY SHAKER



GREY SHAKER



CRAFTSMAN 3 CABINETS OPTIONS

Nano Green



Nano White



CRAFTSMAN 4 CABINETS OPTIONS



#17
Redondo Oak
Shaker

#15
Hermosa Noir
Shaker

#16
Naval Blue
Shaker



#14
Sage Green
Shaker

#28
Huntington Cinder
Double Shaker

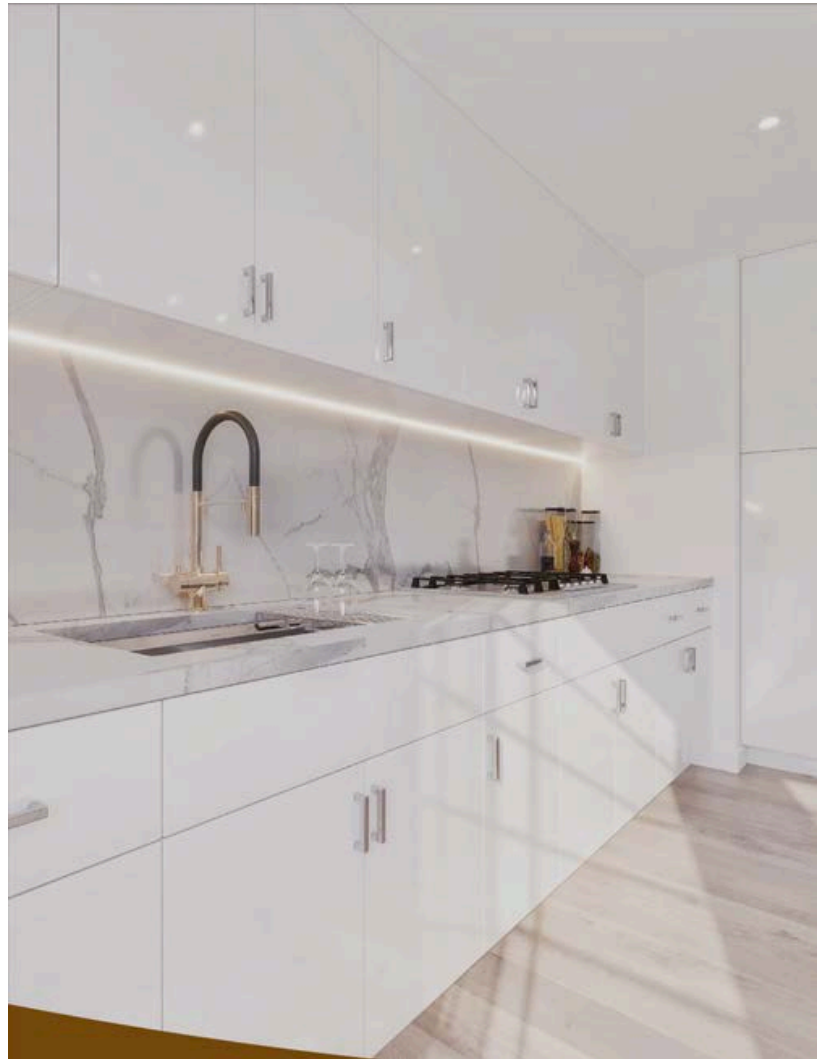
#29
Newport White
Shaker

#27
Laguna Grey
Double Shaker

CRAFTSMAN 5-HIGH GLOSS CABINETS OPTIONS



HW
PET FRAMELESS
HIGH GLOSS WHITE



Camlock and Dowel Construction



DTC Concealed Under Mount Drawer Glides with Soft Close



3/4" Thick Plywood Box and Shelves

Predrilled Pin Holes and Metal Shelf Pins

DTC Adjustable Soft Close Hinges



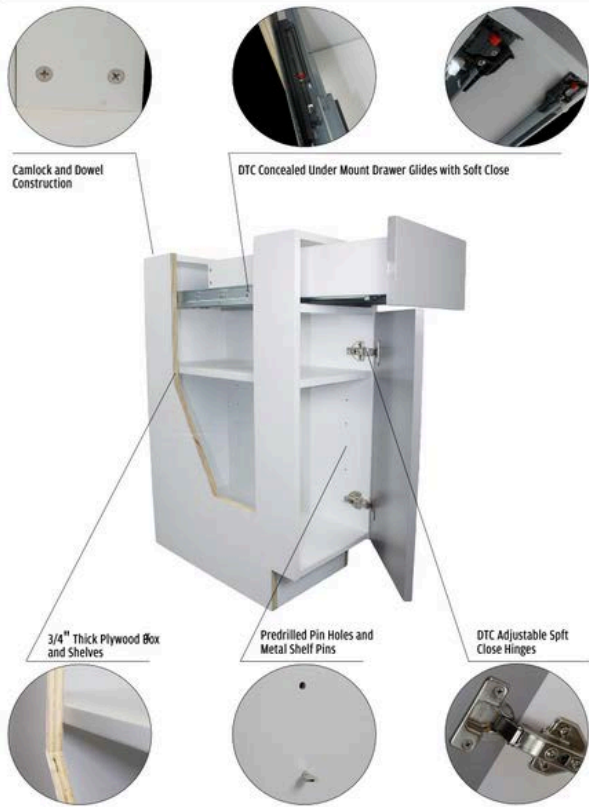
Cabinet Construction

- European style Frameless Cabinets
- 3/4 inch thick cabinet grade plywood cabinet box covered with white melamine
- 3/4 inch thick cabinet grade plywood shelving with front edge banding
- 3/4 inch thick cabinet grade plywood drawer box
- DTC Concealed undermount full extension drawer glides with soft close feature
- DTC adjustable hinge with soft close feature
- Metal Shelf pins
- Rubber Door bumpers

CRAFTSMAN 5-HIGH GLOSS CABINETS OPTIONS



HG
PET FRAMELESS
HIGH GLOSS GRAY



Camlock and Dowel Construction

DTC Concealed Under Mount Drawer Glides with Soft Close

3/4" Thick Plywood Box and Shelves

Predrilled Pin Holes and Metal Shelf Pins

DTC Adjustable Soft Close Hinges

Cabinet Construction

- European style Frameless Cabinets
- 3/4 inch thick cabinet grade plywood cabinet box covered with white melamine
- 3/4 inch thick cabinet grade plywood shelving with front edge banding
- 3/4 inch thick cabinet grade plywood drawer box
- DTC Concealed undermount full extension drawer glides with soft close feature
- DTC adjustable hinge with soft close feature
- Metal Shelf pins
- Rubber Door bumpers

CRAFTSMAN 5-HIGH GLOSS CABINETS OPTIONS

The Delicate Art of Cleaning High Gloss Kitchen Cabinets

Cleaning high-gloss cabinets requires finesse and meticulous attention to detail. Using cleaners or rough cleaning materials can potentially harm the finish and mar the reflective surface. Here is your step-by-step guide for achieving a showroom shine without compromising quality.

Gentle Cleaning Tools for Achieving a Clean Glossy Results

When it comes to cleaning high gloss cabinets, using tools is crucial for obtaining results. Make sure to choose the tools for the job to avoid any scratches and achieve a shiny finish.

Microfiber: Opt for a cloth or pad made of microfiber, as its fine fibers are great at capturing dust and dirt without causing any damage. Use it gently to wipe down your cabinets and remove any surface grime.

Mild Soap Solution: Create a solution by mixing water with a dish soap that is gentle and non-abrasive. Dip the microfiber cloth into this solution making sure to wring out any water, and then use it to wipe down your cabinets. Be careful not to use moisture, as it can harm the wood beneath the glossy finish.

Avoid Abrasives: Avoid using cleaners that contain abrasives scouring pads, or harsh chemicals. These products can strip away the gloss from your cabinets, leaving behind scratches and diminishing their shine.

Taking Care of Stains and Spills

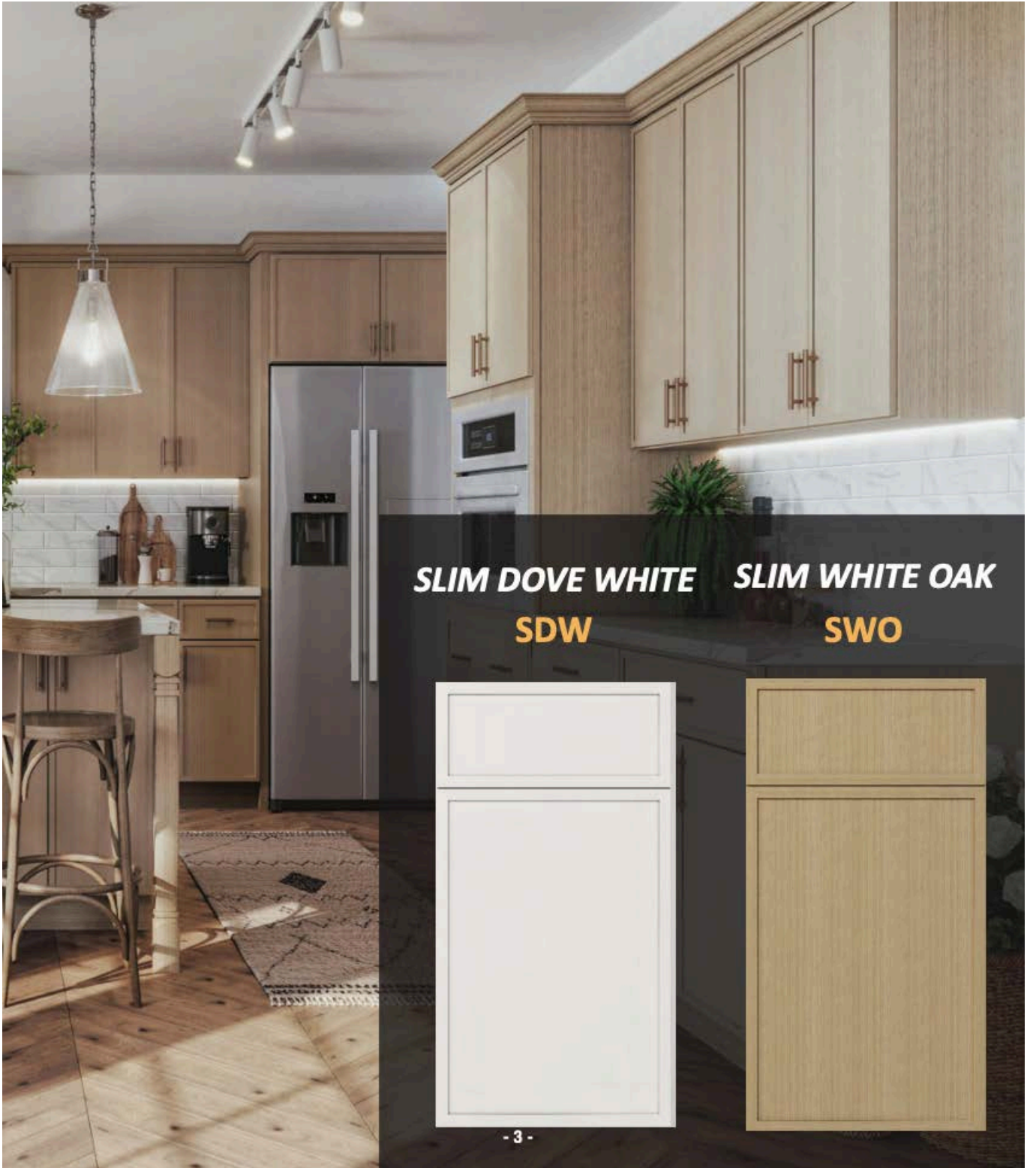
Stains and spills are bound to happen. They don't have to be permanent. Handle these challenges with care in order to maintain the appearance of your high gloss cabinets.

Dealing with Grease and Oil: When dealing with grease and oil on your kitchen's high gloss cabinets soak a cloth in a mixture of water and mild detergent. Gently wipe away the grease using this cloth, remembering to rinse it so you don't spread the grease around further.

Removing Water Marks: To get rid of watermarks or slight discoloration, create a paste by mixing baking soda with water. Apply the paste to the area. Gently rub it in using a soft clean cloth, moving in circular motions. Wipe away the paste. Ensure the surface is dry.

Dealing with Stubborn Stains: If you come across any stains, mix equal parts of vinegar and water to create a solution. Dampen a microfiber cloth with this solution. Gently rub the stain. However, testing this solution on an area is always wise to ensure it doesn't affect the glossy finish.

CRAFTSMAN 5-SLIM SHAKER CABINETS OPTIONS

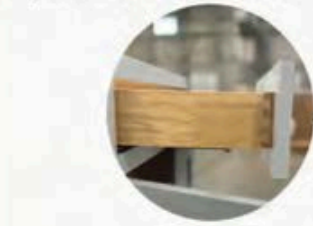


CRAFTSMAN 5-SLIM SHAKER CABINETS OPTIONS

CABINET CONSTRUCTION LAYOUT - SLIM SHAKER

Plywood drawer box with dovetail construction

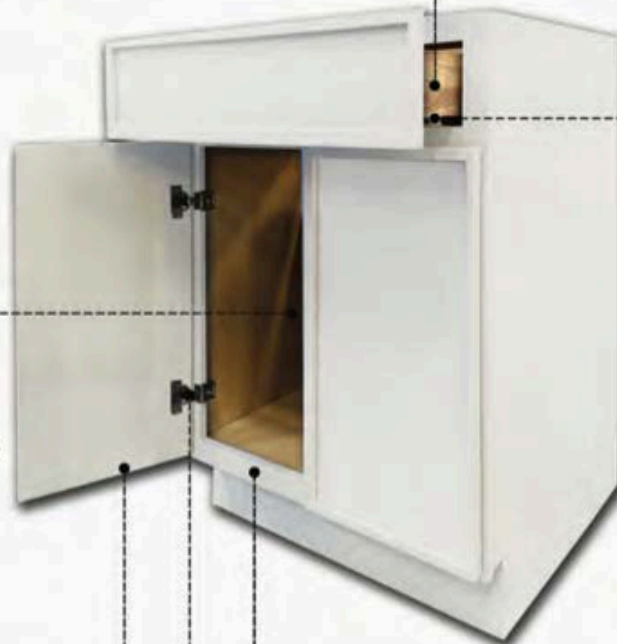
Soft close, undermounted full extension drawer slides.



UV-coated natural interiors



1/2" plywood boxes with finished exteriors



Solid Wood painted face frame

Full overlay five-piece doors and drawer fronts

6 way stainless-steel adjustable door hinges and door bumpers included

CUSTOM CABINETRY OPTIONS

We also offer complete custom cabinet options through a variety of manufacturers.

Products include 70+ distinctive door styles, eight wood species, an array of reconstituted veneers, a selection of man-made laminates, melamines and aluminum framed and frameless cabinets.

Please check with your sales representative if you are interested in exploring custom cabinets.

Here are some examples of recent custom work our clients have had done:



CUSTOM CABINETRY OPTIONS

