

Built by



Funded through



Get the **most** money and **lowest** monthly payment for your renovation

- ✓ Keep your existing mortgage. **No refinance required!**
- ✓ Borrow up to **90% of the after renovation value!**
- ✓ Better rates, longer terms, more savings, and **all about YOU!**

Scan the QR code to schedule a call!



Loan terms and conditions apply, including acceptable membership requirements stipulated by third-party credit union lenders. Not all borrowers or property types qualify. RenoFi is a broker, not a lender, and does not make credit decisions. Loans underwritten and funded by third party lenders. NMLS # 1802847 / # 2412747 (www.nmlsconsumeraccess.org); in CA: Renovation Technologies Holdings Inc., CA Department of Real Estate Broker License # 02195141. RenoFi and contractor are not affiliated with nor compensated by each other.

Built by



Funded through



Get the **most** money and **lowest** monthly payment for your renovation

- ✓ Keep your existing mortgage. **No refinance required!**
- ✓ Borrow up to **90% of the after renovation value!**
- ✓ Better rates, longer terms, more savings, and **all about YOU!**

Scan the QR code to schedule a call!



Loan terms and conditions apply, including acceptable membership requirements stipulated by third-party credit union lenders. Not all borrowers or property types qualify. RenoFi is a broker, not a lender, and does not make credit decisions. Loans underwritten and funded by third party lenders. NMLS # 1802847 / # 2412747 (www.nmlsconsumeraccess.org); in CA: Renovation Technologies Holdings Inc., CA Department of Real Estate Broker License # 02195141. RenoFi and contractor are not affiliated with nor compensated by each other.



STEP ONE

FEASIBILITY SURVEY

ROC# 327-309

We are trying to answer 3 questions during this step:

1. Does this project meet city zoning standards?
2. Can we create & design something that you love?
3. Can we obtain HOA approval?

1 Site Plan With Setbacks

- BASED ON YOUR ZONING DISTRICT, IF THE BUILDING REQUIREMENTS CHANGE WE MUST DETERMINE WHAT THOSE ARE AND WHERE ON YOUR LOT WE ARE ALLOWED TO BUILD

2 As Built Plan & 3D SCAN

- CREATE A DIGITAL MODEL OF YOUR SPACE WITH ACCURATE DETAILS AND MEASUREMENTS
- DETAILED PLAN OF WHAT YOUR STRUCTURE CURRENTLY LOOKS LIKE SO WE KNOW WHAT WE ARE STARTING WITH

3 Renovation Plan

- WHAT THE COMPLETED STRUCTURE WILL LOOK LIKE AND HOW IT FLOWS WITH THE EXISTING STRUCTURE

4 Exterior Elevations

- DIGITAL PICTURES OF THE OUTSIDE, NEEDED FOR HOA AND CITY SUBMITTAL

FAQ's:

What are the costs involved in this step?

This phase costs \$3000.

How long does this process typically take?

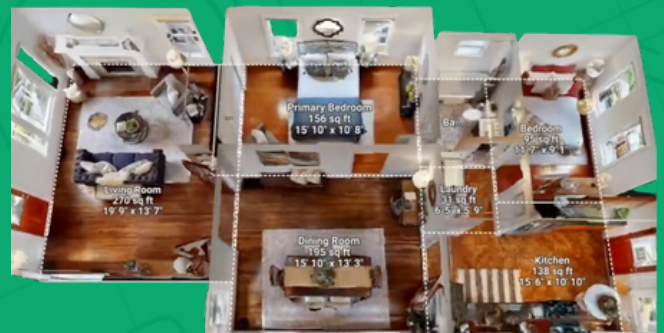
4-6 weeks

Does this step produce plans I can use to build from?

No, that happens in Step 2. This step just ensures that we CAN build your project--it fits within your space and within the guidelines of your city and HOA.

Next Steps

Once these components are in place, and you want to proceed with the project you move onto Step 2: Plans and Engineering





STEP TWO

ROC# 327-309

ALL ABOUT THE PLANS DESIGN • PERMITTING

1 Digital Design

- CREATE A HIGHLY DETAILED DIGITAL RENDERING SO YOU UNDERSTAND WHAT WE'RE DOING LONG BEFORE WE EVER START SWINGING HAMMERS.

2 Interior Design

- CREATE A STYLE AND MAKE SELECTIONS THAT ARE INCORPORATED INTO THE FUNCTIONAL 3D DESIGN

3 Engineering

- WORK WITH MECHANICAL, PLUMBING, ELECTRICAL, STRUCTURAL, CIVIL, ETC. PROFESSIONALS TO ENSURE YOU'RE PROJECT IS READY FOR THE CITY.

4 Permitting & Plan Management

- SUBMIT THE COMPLETED PLANS TO THE CITY FOR APPROVAL AND PERMITS

FAQ's:

How much does this step cost?

A \$10,000 retainer is required to get started. The average cost of this phase is approximately \$9,000 and typically includes all the items below:

- Design
- Mechanical Engineering
- Plumbing Engineering
- Electrical Engineering
- Permitting

What is the timeline for this step?

This step can take 6-8 months

Does this produce plans I can build from?

Yes





STEP THREE

BUILD

ROC# 327-309

1 Dedicated Team

- PROJECT COORDINATOR
- PROJECT MANAGER
- VETTED AND TRAINED FIELD TECHNICIANS

2 Optimized Schedule

- BEFORE WE EVER BREAK GROUND, OUR TEAM CREATES A SCHEDULE AROUND YOUR LIFE, MINIMIZING THE IMPACT TO YOU AND YOUR FAMILY BUT STILL STAYING ON TRACK

3 Connect

- ACCESS TO YOUR OWN PERSONAL CUSTOMER PORTAL WHERE YOU CAN SEE DAILY LOGS OF WORK PERFORMED , YOUR COMPLETED SCHEDULE, PLANS, PHOTOS, VIDEOS AS WELL AS COMMUNICATE DIRECTLY WITH YOUR TEAM.

FAQ's:

How much does this step cost?

We start swinging hammers with a 25% deposit followed by progress payments made on invoices. Most projects receive an invoice on the 1st of the month and we ask that all payments are made by the 15th. We collect the last 10% when the project is completed.

What is the timeline for this step?

The actual building time depends on what we're building, but the planning to build takes about 1-2 weeks. Once your deposit is made you will be introduced to a project coordinator that specializes in job setup. This person will ensure all the items we need are uploaded and well documented so our team can hit the ground running once things start. Then it's on to your Project Coordinator and Superintendent who will be setting the schedule, timeline, performing a site walk and will be your main point of contact throughout the project.

Tell me more about the customer portal.

We can do better than that, login to take a test drive. Scan the QR code and use these credentials:

Name: Test Drive

Password: TestDrive2024

Do have references I can contact?

Absolutely, your Sales Executive can provide you a list of references you can contact.



Scan to Test Drive
Buildertrend



Work with us in 3 steps.

1

introduction

- Free estimate of the work to be done
- A free initial design rendering (\$600 value) for any kitchen, bathroom, or feature wall (*limited to 2 spaces initially)
- Direct line to your Sales team

2

Plans and Design

- We will create a functional 3D design rendering of your project
- You'll have access to Interior Design Services
- You'll have access to one of our dedicated selection representatives.
- We will organize the creation of and obtaining any plans and permits that are needed

3

Build

- Dedicated operations team assigned to your project
- Optimized Schedule to minimize the impact to your household.
- Vetted and trained field technicians
- Customer Portal for daily communication and status updates

FAQ's:

How long does a standard kitchen or bathroom renovation typically take?

6-8 weeks

What is required to get started?

A 25% deposit

Do have references I can contact?

Absolutely, your Sales Executive can provide you a list of references you can contact.



Access Our
Online Gallery

Our Story

For over 40 years, P.J. Hussey & Associates, Inc. has been a trusted name in Phoenix, Arizona, known for our dedication to excellence in property management, construction, and real estate.

In 1983 Patti Hussey started a small property management firm, that has now grown to offer a seamless, full-service experience for our clients.

In 2004, Andrew Thruston, Patti's son, founded Rental Renovators Inc., which has since evolved into P.J. Hussey Construction emerging as a leader and innovative construction firm serving the Greater Phoenix Area.

From kitchen and bathroom upgrades to whole-home remodels and additions, we deliver top-quality renovations customized to each client's unique vision and needs.

OUR CORE VALUES

**Commitment to
Excellence,
Growth, Serve,
Support, and
Positive Energy—
guide everything
we do.**

BuiltDifferent

Our slogan, "Built Different," reflects our dedication to not only delivering exceptional craftsmanship but also creating an outstanding experience for our clients. We believe in transparency at every step, ensuring open communication and clarity throughout the entire construction process. Your trust is our priority, and we strive to exceed your expectations with every project.



**Andrew
Thruston
Owner**



Meet Your OPERATIONS Team

PROJECT MANAGER

Your PM is there keep your project on schedule by assisting the Superintendents and Project Coordinators. They ensure everyone has what they need to be successful. They will also foresee and help address any issues.

OUR CORE VALUES

**Commitment to
Excellence Growth**

**Serve
Support**

**Positive Energy
—guide everything we do.**

Behind every successful project is our dedicated operations team working seamlessly to ensure every detail is handled with precision and care.

We're here to provide you with a stress-free experience, keeping your vision at the forefront while delivering exceptional results.

SUPERINTENDENTS

Your Super is there to manage all aspects of the job, this is your primary contact person.



Kevin



Scott



Gilbert

PROJECT COORDINATORS

Your PC is there to set the schedule, keep you informed and assist the Superintendents



Cyrine



Justine



Ashley



Honey



Meet Your **DESIGN** Team

DIGITAL DESIGN

Design an efficient and functional space with the help of our 3D visualizations. See your project come to life before construction begins, allowing you to make informed decisions and ensure the layout meets your needs and vision.



Noemi

OUR CORE VALUES

**Commitment to
Excellence Growth
Serve
Support
Positive Energy**
—guide everything we do.

Our talented design team is here to bring your vision to life, combining creativity with functionality to craft spaces that perfectly fit your lifestyle.

From initial concepts to final selections, we work closely with you to understand your style, needs, and preferences, ensuring every detail aligns with your dream.

INTERIOR DESIGN

If you're not sure how to bring your vision to life, one of our interior designers is there to help you with products, colors, spatial planning and even showroom trips.



Alex



Cara

PLANS & ENGINEERING

Our expert team specializes in creating detailed plans and engineering documents tailored to meet your project's needs. We handle everything from design to city submissions. We ensure accuracy and compliance for a smooth approval process, keeping your project on track.



Keza

SELECTIONS

We guide you through the material selection process, ensuring you choose the best options for your project's design and budget. From finishes to fixtures, our team offers expert advice and access to quality products that meet your style and functional needs.



Marrianne





Why Our CABINETS are better

Than a Big Box Brand



Production Based Cabinets

Popular cabinet designs from interior designers and architects that cabinet manufacturers make in bulk.

- Removes the human factor to cabinet making, uniform cabinets without any imperfections.
- You're getting a custom looking cabinet but at a way lower price point.



Full Plywood Construction Box

Our base cabinets are a full plywood construction box.

- Incredibly resistant to moisture which is perfect in kitchens, bathrooms, and laundry rooms.
- NO particle board which is what you get with an off the shelf option at a big box store.



Doors are made of real wood

Real wood doors are incredibly durable, resistant to scratching, weather and moisture.

- NO malamine or themofoil



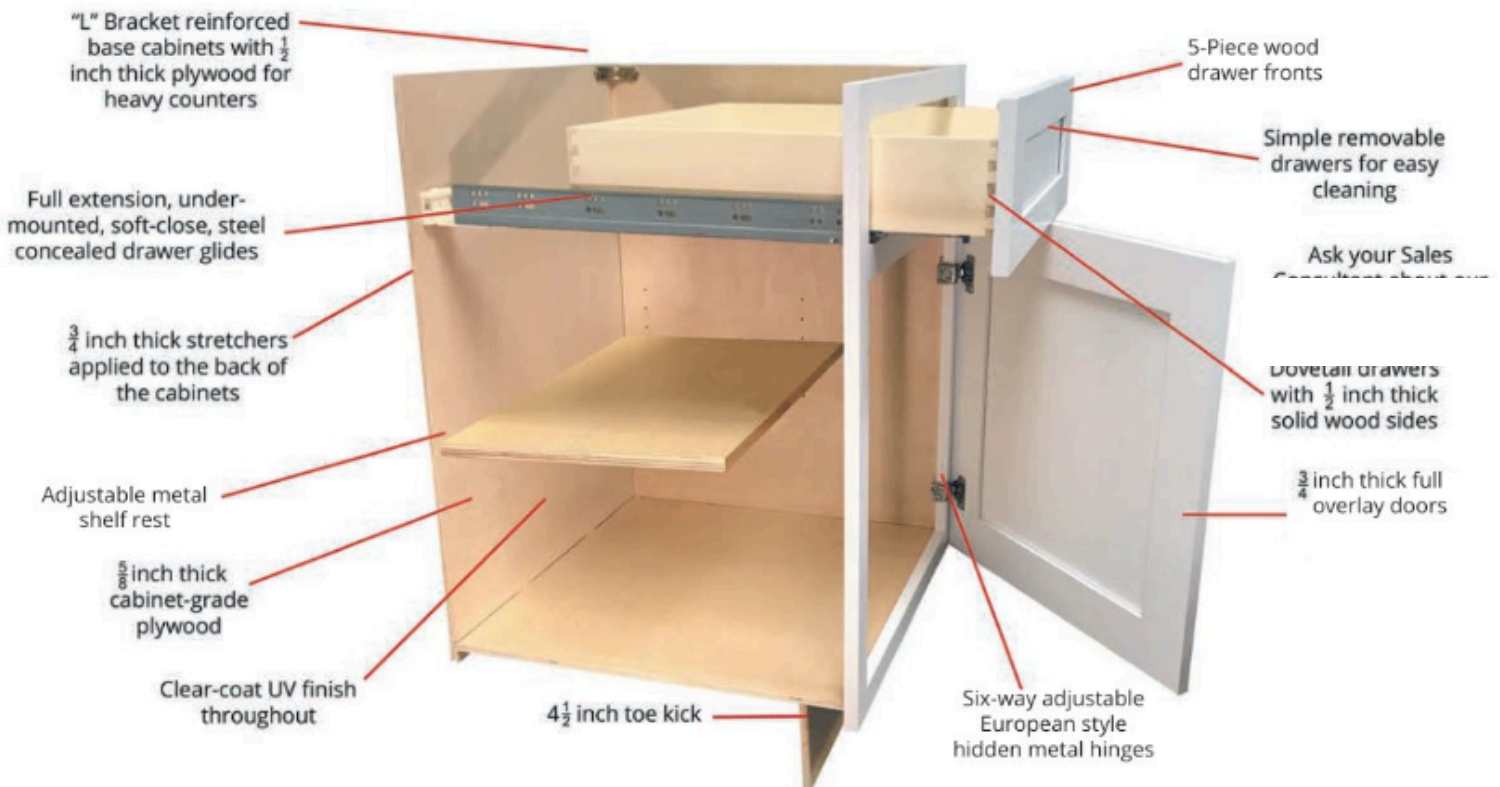
Dovetail Drawers

Our drawers are not just two pieces of wood nailed together but interlocking dovetail joints making them incredibly durable.



Under Mount Hardware

Our cabinets have under mount hardware in the cabinet drawers which helps to support the weight of the items in the drawers vs a low quality cabinet which will have side mount hardware.



*Some products may vary depending on on supplier.



ALL ABOUT

Material Selections

Planning Your Project

When planning your renovation or remodel, it's important to know that our estimates cover labor costs only. Material costs are not included because they can vary greatly depending on the style, quality, and brand you choose. To give you the most accurate estimate and full control over your project, we separate these costs, allowing you to select the materials that best fit your style and budget. But don't worry — we're here to help you every step of the way, guiding you to choose the perfect materials for your vision and needs.

How We Help You Choose the Perfect Materials:



Dedicated Team Support

Our knowledgeable team members are ready to assist you at every step. We'll help you navigate the selection process, ensuring it's simple and stress-free.



Product Catalogs

Explore our curated catalogs that offer a wide variety of material options, from countertops to cabinetry, tiles to flooring — all to suit different tastes and budgets.



Interior Designers Available

Want a professional touch? Our network of talented interior designers is available to help you refine your vision and make selections that align with your personal style and project needs.



Electronic Selection Form

We provide a detailed, user-friendly form to capture all your choices. This helps keep everything organized, ensuring you get exactly what you want without any guesswork.



FAQ's:

How much should I budget for materials?

Budgeting depends on your choices, but here are some ballpark figures:

- Kitchen Materials:
 - Basic Materials \$5,000-\$10,000, Mid-Range \$10,000 - \$20,000 High End: \$20,000 - \$50,000
- Bathroom Materials
 - Basic Materials \$3,000-\$7,000, Mid-Range \$7,000 - \$15,000 High End: \$15,000 - \$30,000

Can you help me find suppliers within my budget?

- Absolutely! We have access to a wide range of trusted suppliers who offer materials at various price points — from economy to premium. We'll help steer you in the right direction based on your budget and style preferences.

Do I have to handle the material selection alone?

- Not at all! Our team is here to guide you. We'll connect you with suppliers, provide product catalogs for inspiration, and, if desired, connect you with an interior designer to ensure your selections match your vision perfectly.